

Disparities and the Older Adult Population—Additional Considerations

Adrian Miller
Executive Director
Colorado Council of Churches

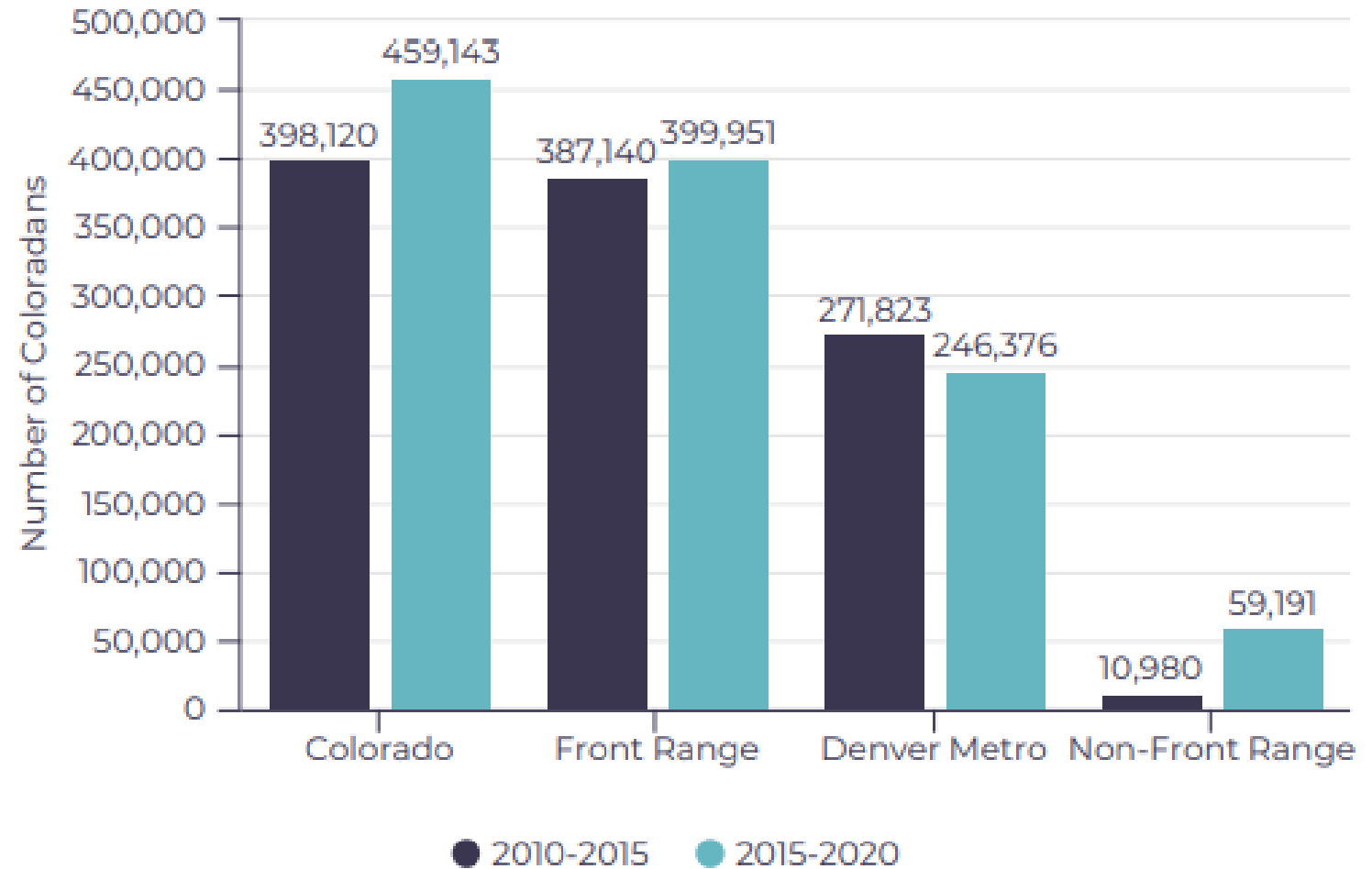


Colorado Council of Churches
Walking together in faith, working together for justice.

Demographic Trends

Demographic Trends

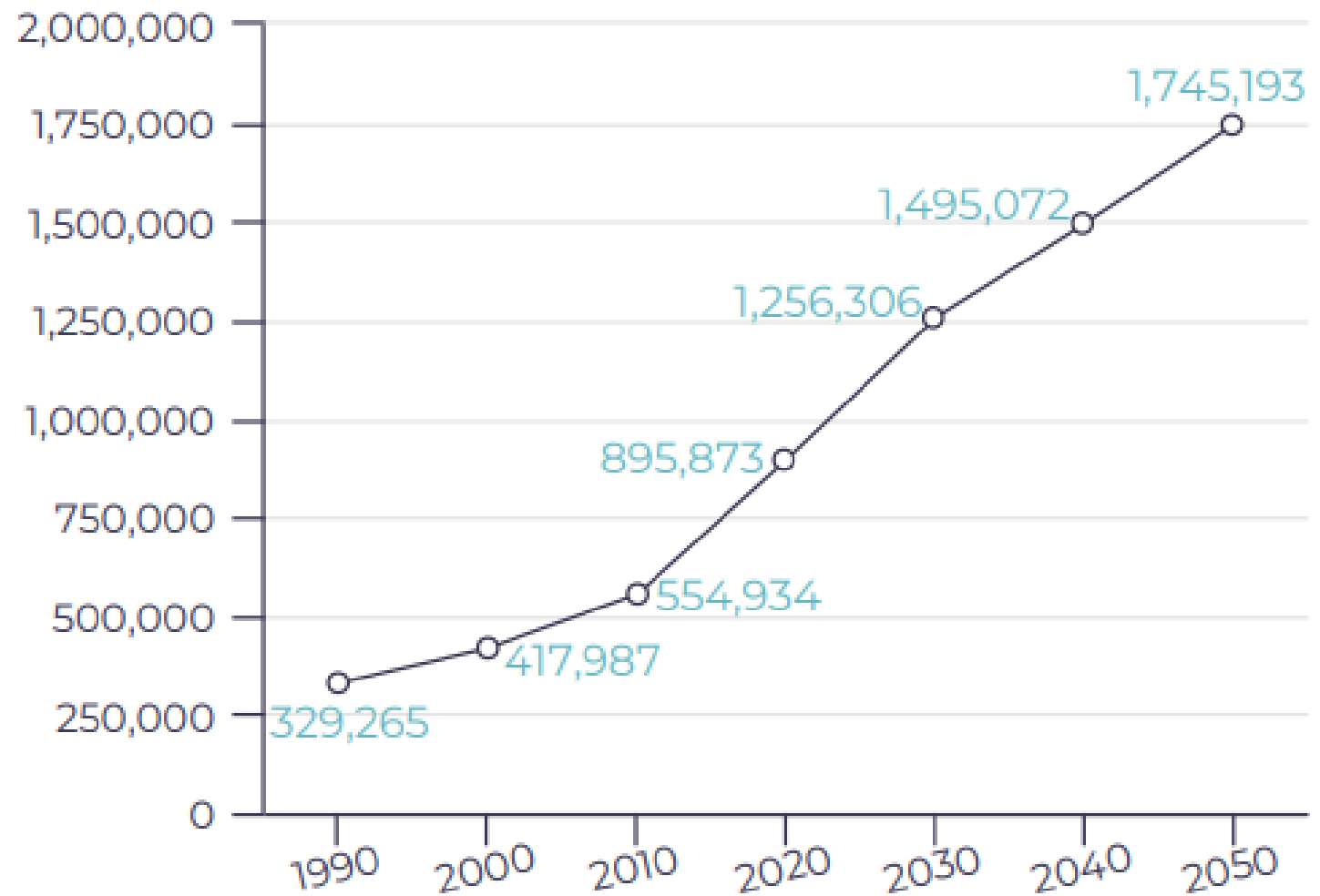
Expected Population Growth



Source: Colorado Demography Office, Population Estimates 2010-2015, 2015-2020

Demographic Trends

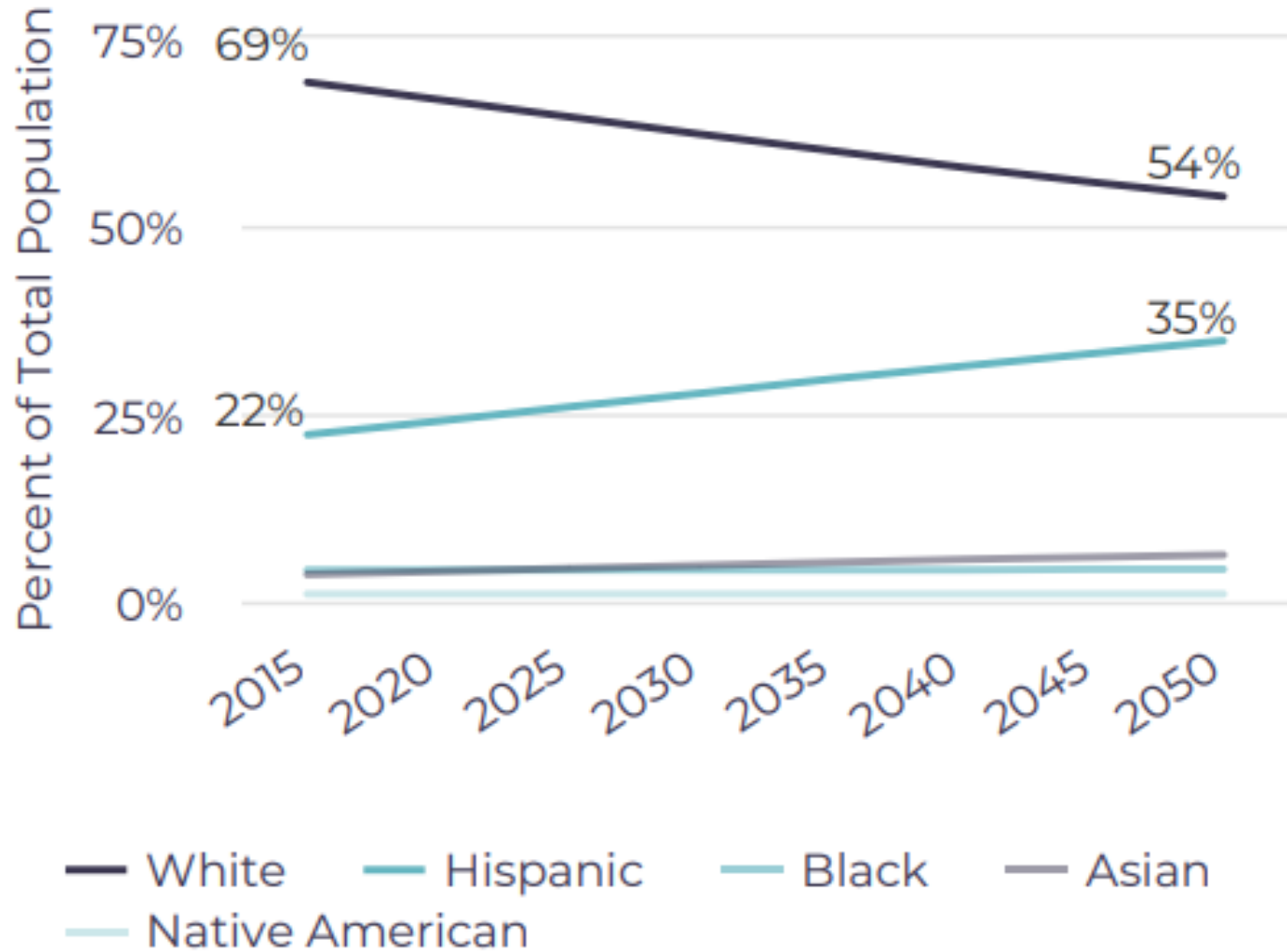
Coloradans Over 65 Expected to Increase Dramatically



Source: Colorado Demography Office, population by single year of age & region

Demographic Trends

Colorado's Hispanic Population is Expected to Increase

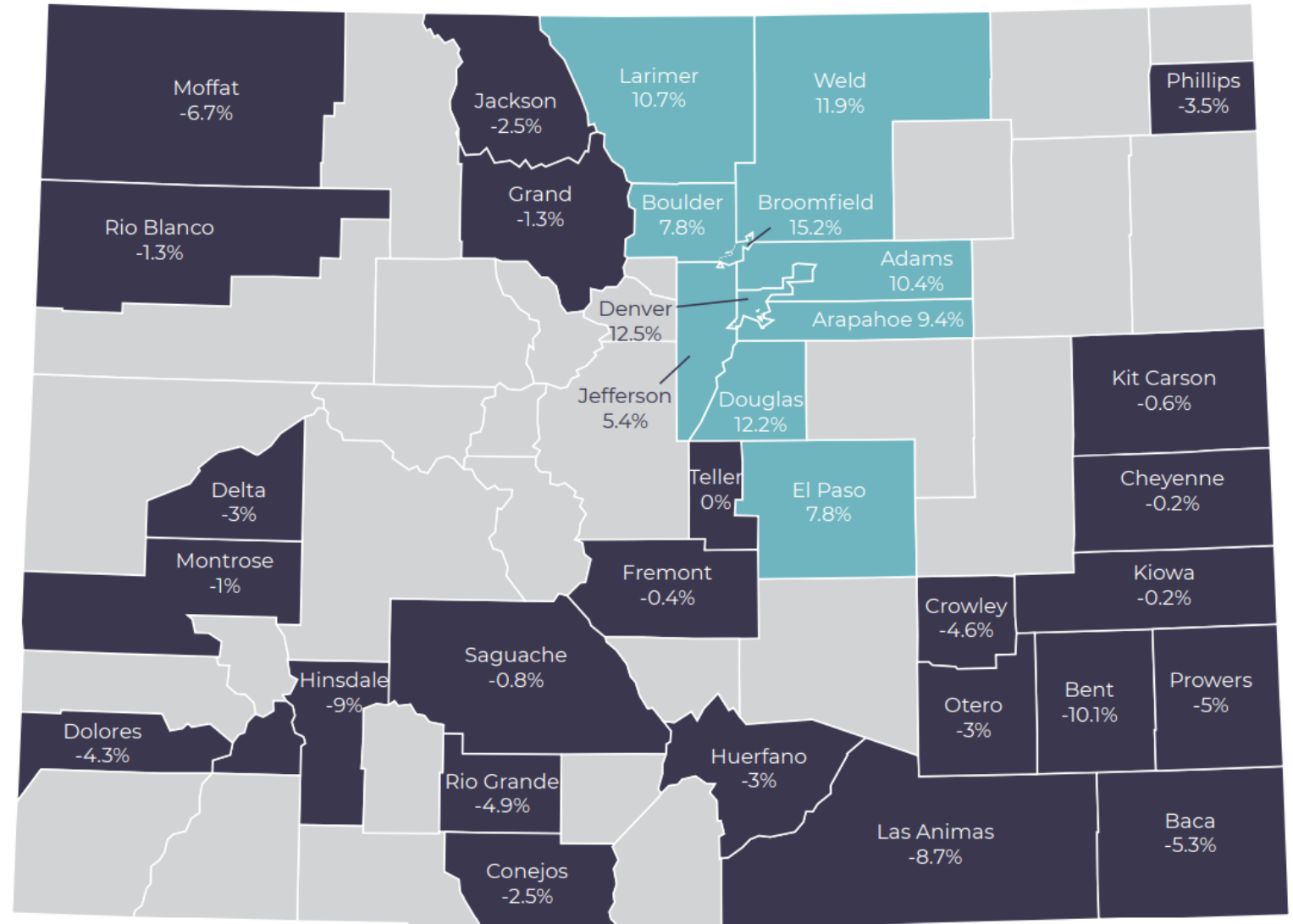


Source: Population of Colorado's Racial and Ethnic Groups, 2000-2050, Colorado Demography Office, 2016

Demographic Trends

Front Range Population Growing, Rural Shrinking

Percent Population Change in Colorado Counties with Largest Population Losses and Gains



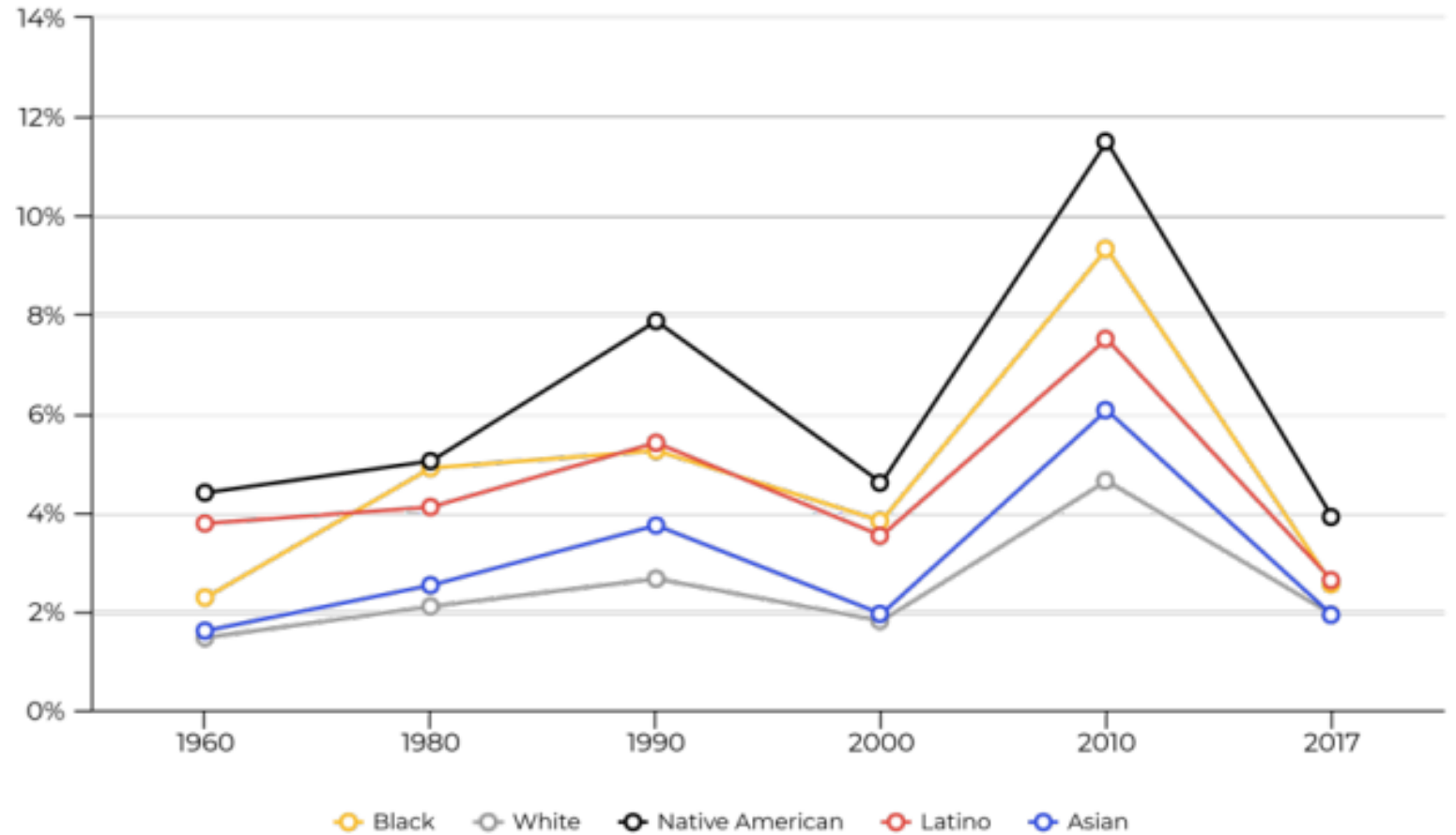
Source: Colorado Demography Office, Colorado Population Estimates by County, 2010-2016

■ Counties with population loss ■ Counties with population gain ■ No data

Income Inequality

Income Inequality

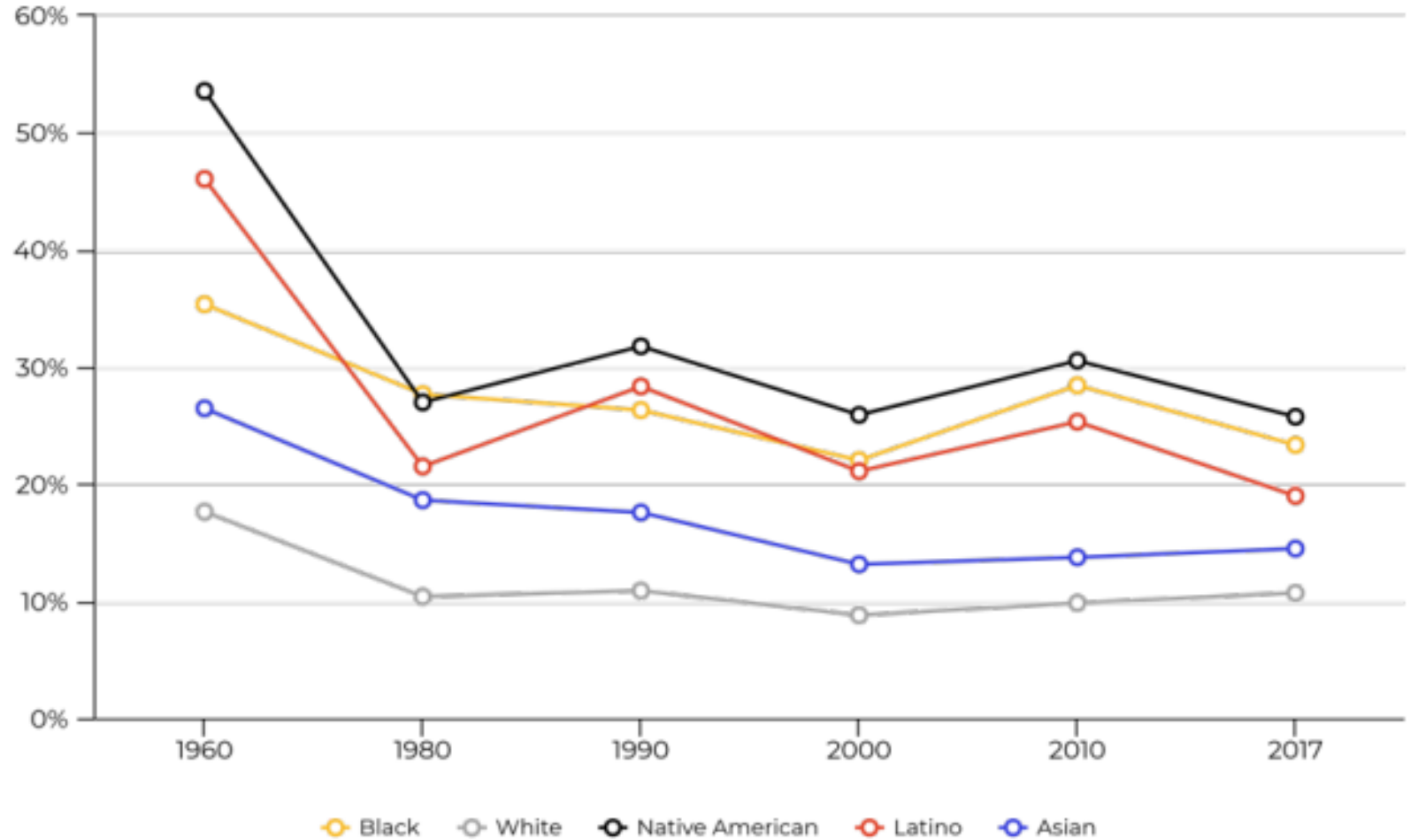
COLORADO UNEMPLOYMENT BY RACE OVER TIME



Source: Bell Analysis of American Community Survey Data 1960-2017

Wealth Gap

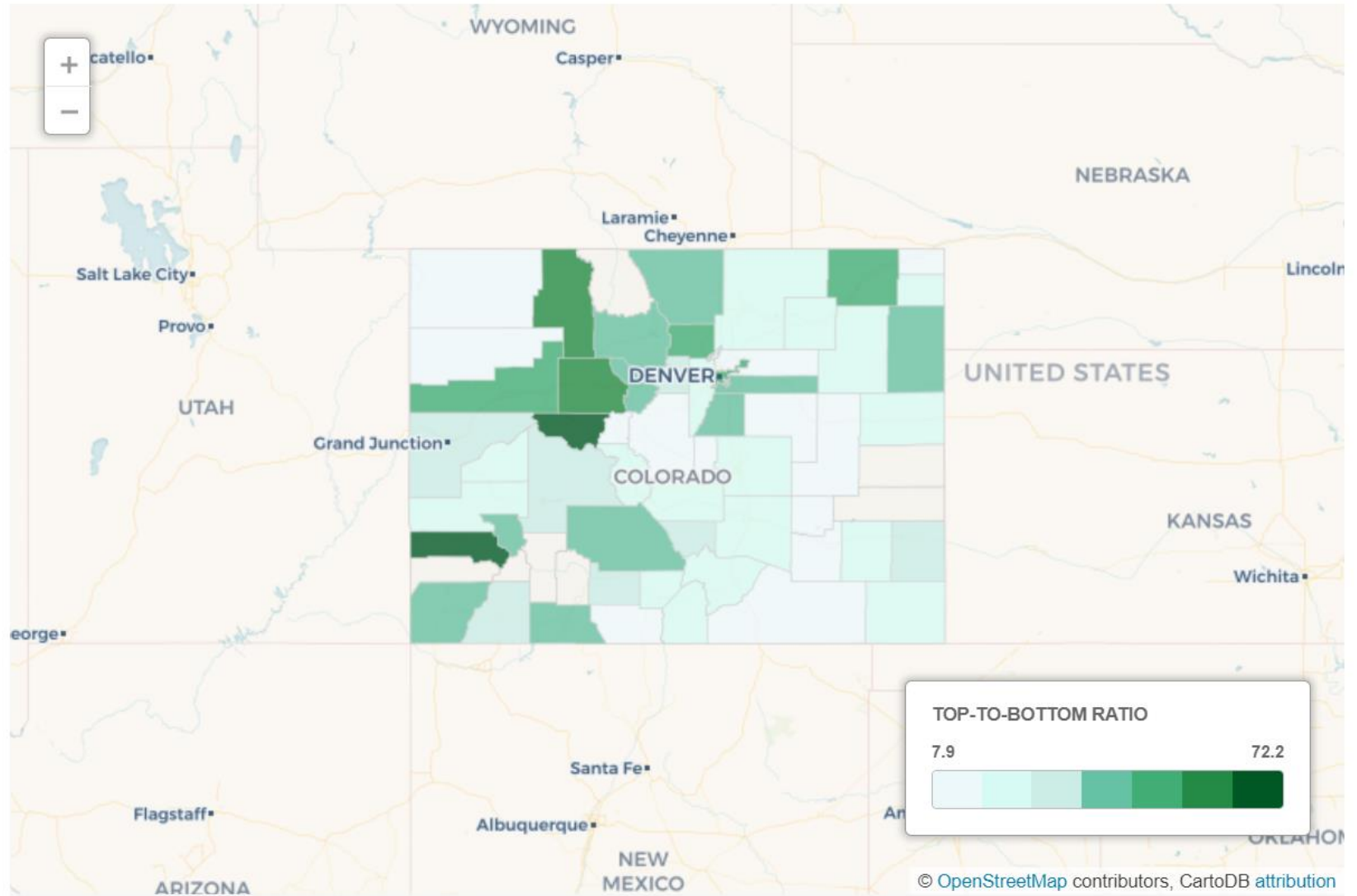
COLORADO POVERTY BY RACE OVER TIME



Source: Bell Analysis of American Community Survey Data 1960-2017

Income Inequality: Rural Snapshot

Income Ratio By County



Ratio of top 1 percent income to bottom 99 percent income for all Colorado counties, 2015. For counties with a null value (Kiowa, Cheyenne, Hinsdale, San Juan, Dolores, Mineral, Jackson), no data was collected or available.

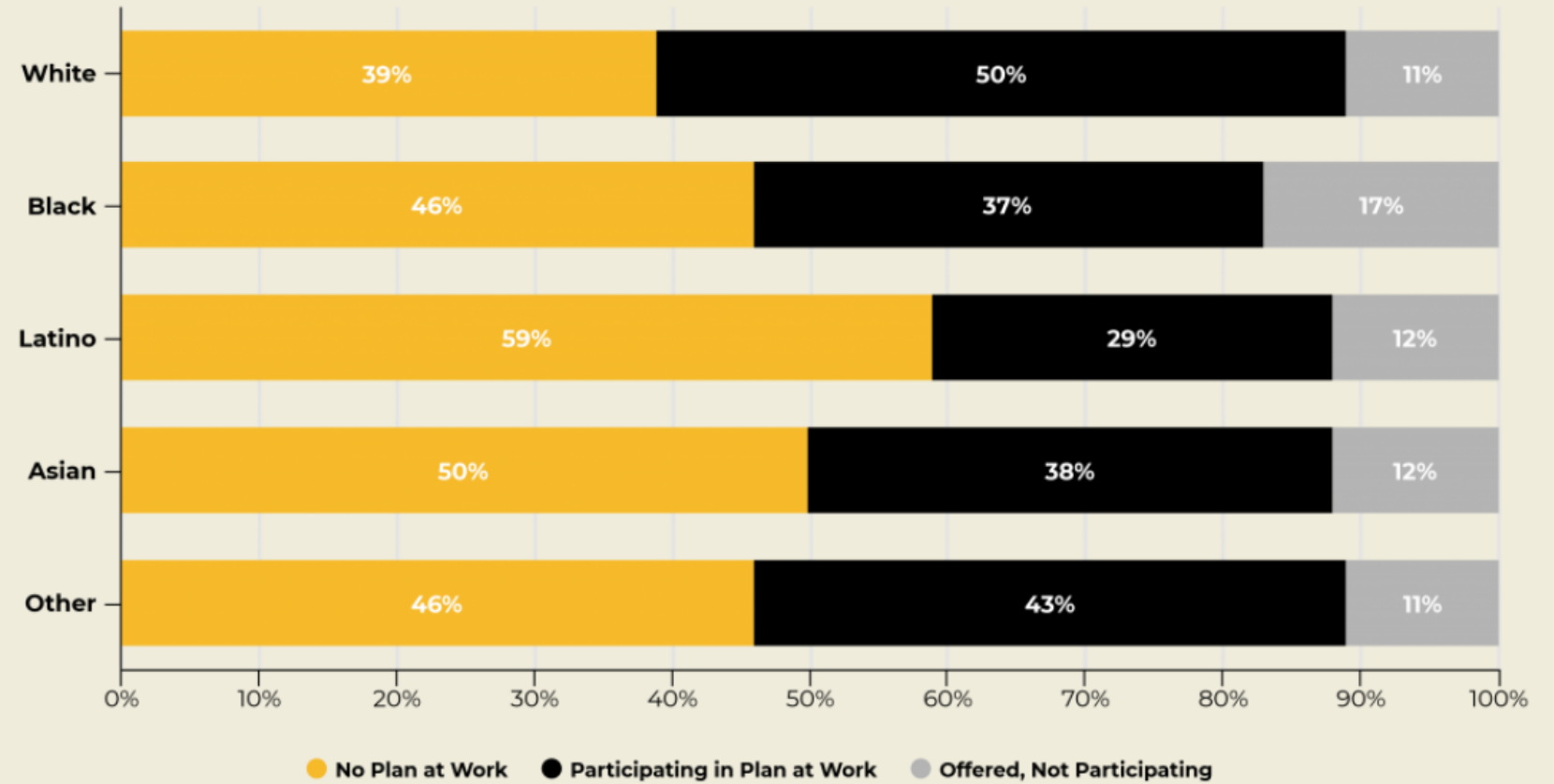
Source: Economic Policy Institute

Credit: Hayley Sanchez, Jim Hill / CPR News

Retirement

Retirement

RETIREMENT PLAN ACCESS & PARTICIPATION BY RACE



(Private-Sector Workers Age 25 to 64, 2010-2013)

Source: Bell analysis of Current Population Survey data downloaded from IPUMS-CPS, University of Minnesota, www.ipums.org

Path to a secure retirement

- 54 percent, about 980,000 Coloradans, don't participate in a workplace retirement plan
- Source: The Bell Policy Center

Path to a secure retirement

- 54 percent, about 980,000 Coloradans, don't participate in a workplace retirement plan
- 43 percent, about 780,000 Coloradans, don't have access to a workplace retirement plan
- Source: The Bell Policy Center

Path to a secure retirement

- 54 percent, about 980,000 Coloradans, don't participate in a workplace retirement plan
- 43 percent, about 780,000 Coloradans, don't have access to a workplace retirement plan
- Workers in low-wage jobs and small business workers overwhelmingly (over 60 percent) lack access to a workplace retirement plan
- Source: The Bell Policy Center

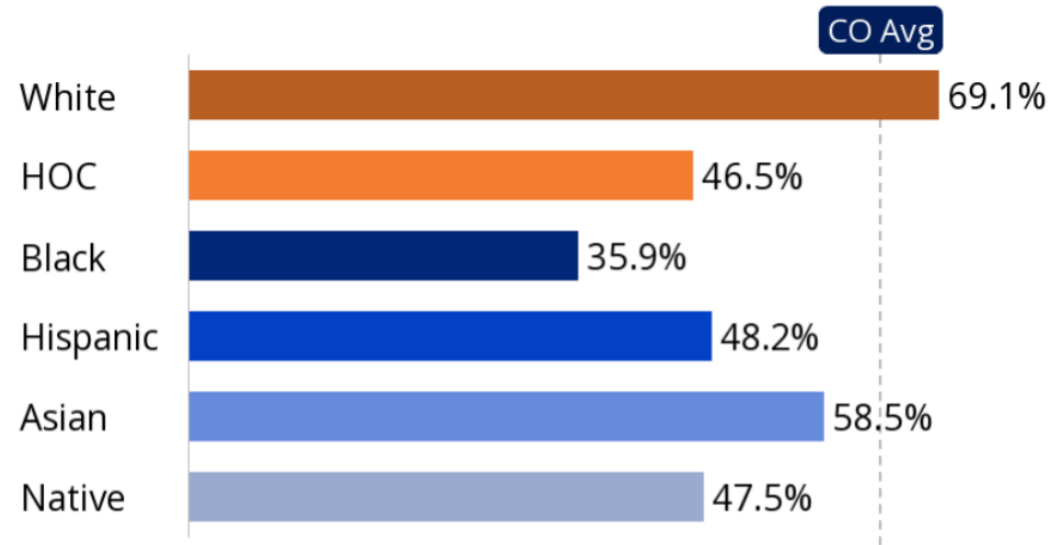
Path to a secure retirement

- 54 percent, about 980,000 Coloradans, don't participate in a workplace retirement plan
- 43 percent, about 780,000 Coloradans, don't have access to a workplace retirement plan
- Workers in low-wage jobs and small business workers overwhelmingly (over 60 percent) lack access to a workplace retirement plan
- Black and Hispanic workers are the least likely to participate in (37 percent and 29 percent participate, respectively) or have access to a workplace retirement plan (46 percent and 59 percent lack access, respectively)
- Source: The Bell Policy Center

Homeownership

Homeownership

Homeownership by Race in Colorado



© 2016 CFED scorecard.cfed.org

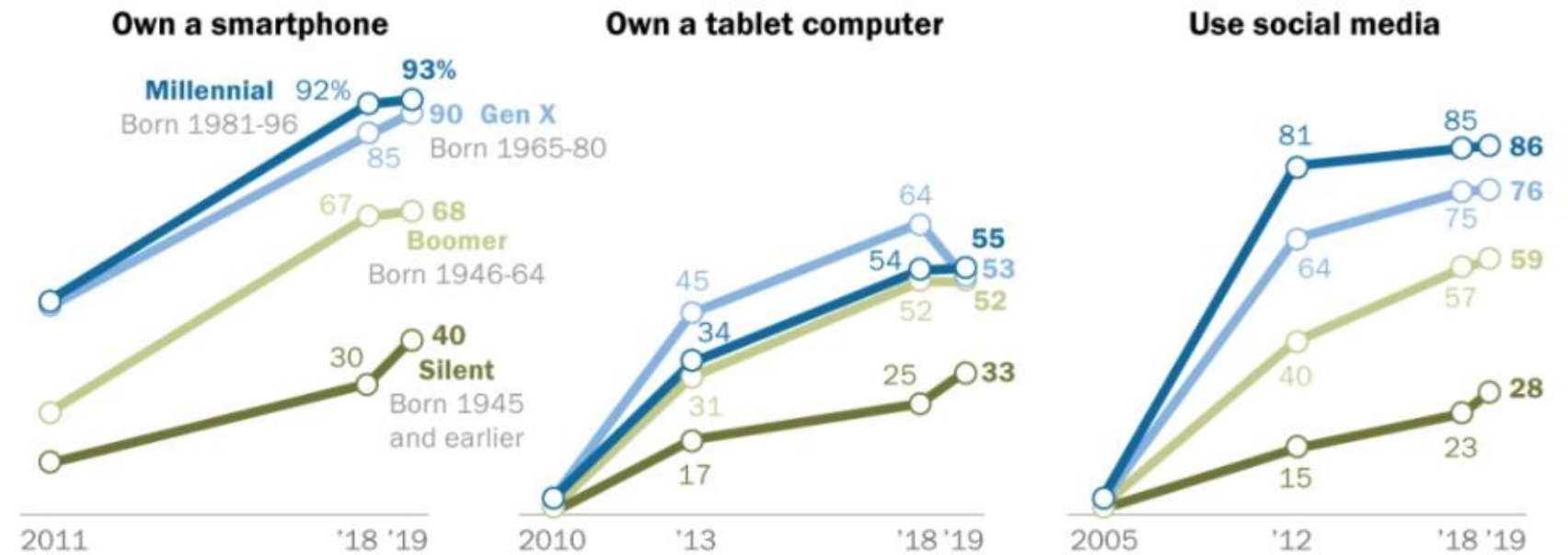
Whites in Colorado are roughly twice as likely as blacks to own a home, according to Corporation for Enterprise Development data. Homeownership is a major contributor to white Americans having more than ten times the average net worth of black or Latino Americans.

The Digital Divide

Digital Divide: Tech Adoption

Millennials lead on some technology adoption measures, but Boomers and Gen Xers are also heavy adopters

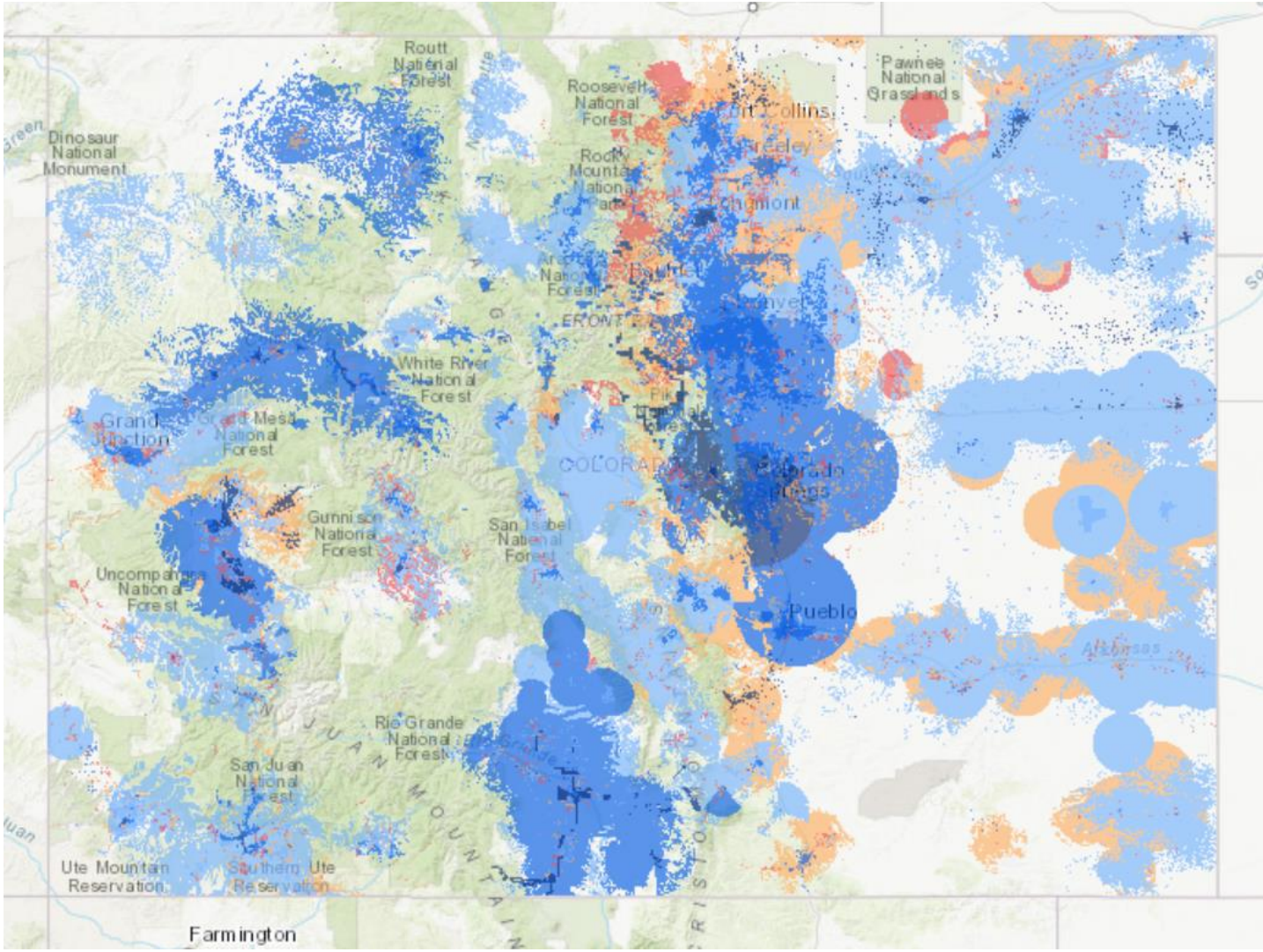
% of U.S. adults in each generation who say they ...



Note: Those who did not give an answer are not shown.

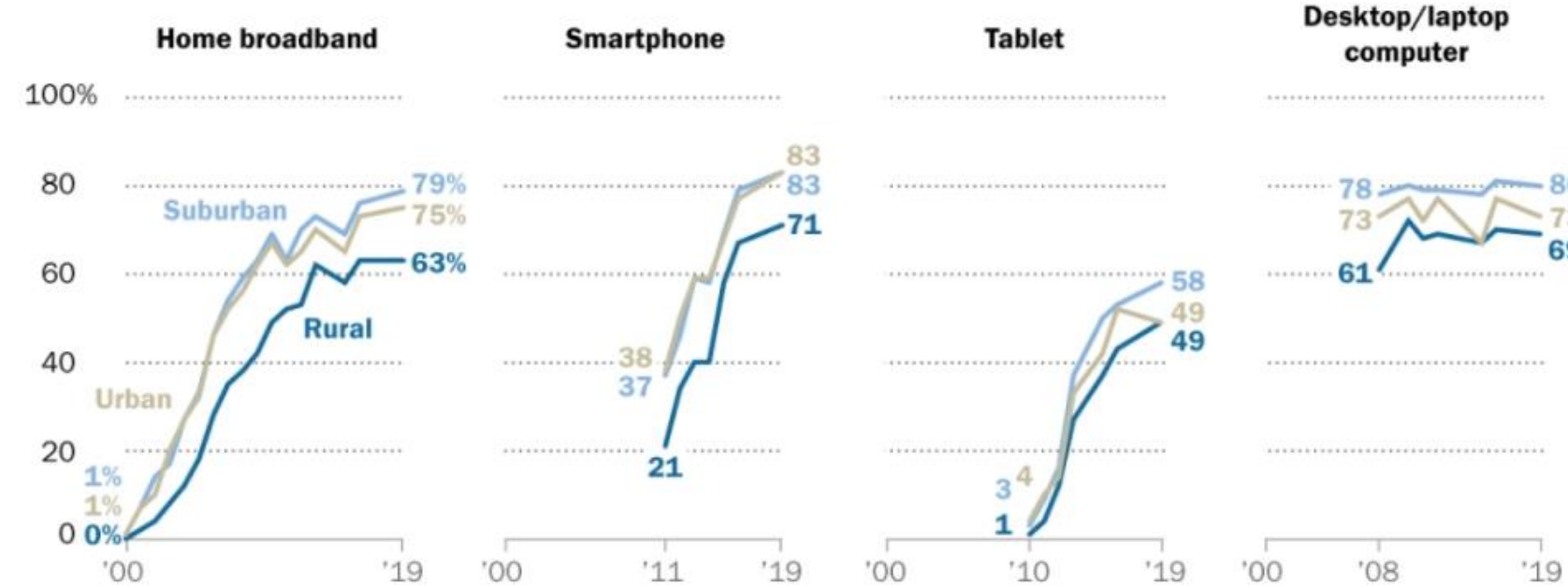
Source: Survey conducted Jan. 8 - Feb. 7, 2019.

Digital Divide: Colorado Broadband Map



Rural Americans have consistently lower levels of broadband adoption

% of U.S. adults who say they have ...

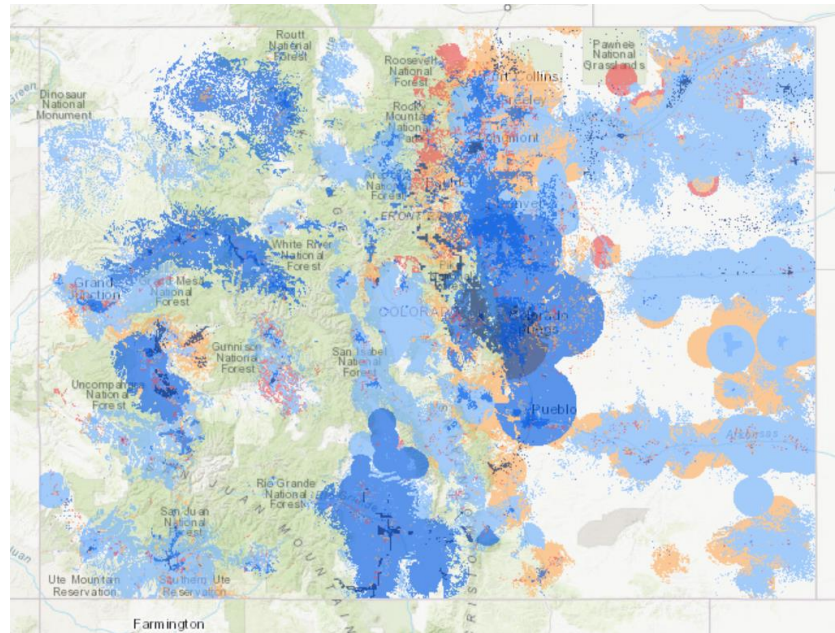


Note: Respondents who did not give an answer are not shown.
 Source: Survey conducted Jan. 8-Feb. 7, 2019. Trend data from other Pew Research Center surveys.

PEW RESEARCH CENTER

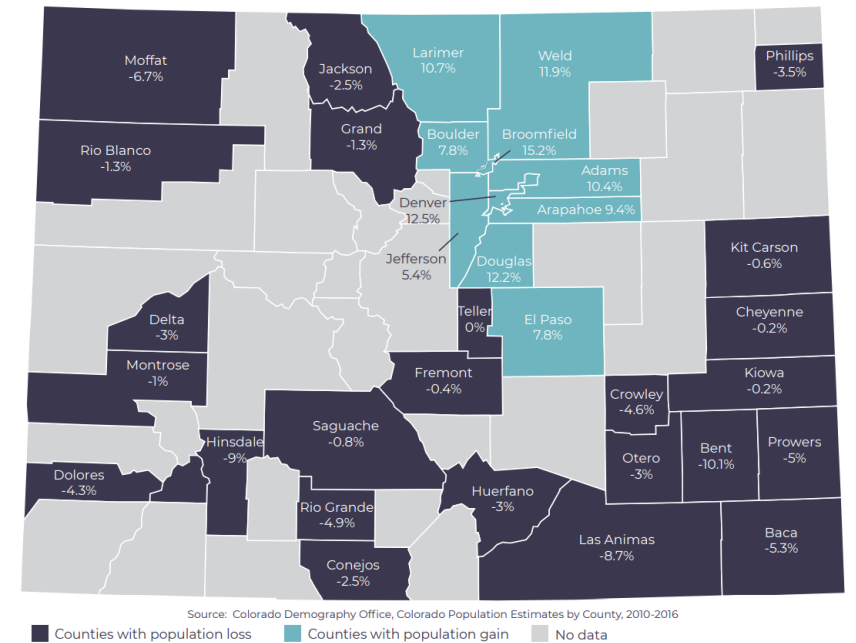
Digital Divide:
Rural Impact

The Lack of Broadband is a Growing Problem for Seniors in the Information Age



Front Range Population Growing, Rural Shrinking

Percent Population Change in Colorado Counties with Largest Population Losses and Gains



Digital Divide with mixed results-- Transportation



Getting There App

- ✓ The Denver Regional Mobility & Access Council has designed a mobile app to help older adults find transportation in their area that fits their needs.
- ✓ The app will provide a list of transportation providers based on where you are, where you're going, why you are going and if you require any accommodations to get there.
- ✓ The app covers transportation providers in 9 counties: Adams, Arapahoe, Boulder, Broomfield, Clear Creek, Denver, Douglas, Gilpin and Jefferson.
- ✓ It is free to download and easy to use with no login or password.

To learn more about the app or to schedule an app training, please contact DRMAC Program Manager, Ashley Doty.

Phone: 720-258-6546
Email: adoty@drmac-co.org



SCAN ME



*To download the app, go into the app store on your smartphone and search for Getting There. Or open your camera on your smartphone and scan the QR code to take you directly to our app in the app store.

Credit: DRMAC

Covid Vaccine Distribution as an Example of a Digital Divide Challenge