

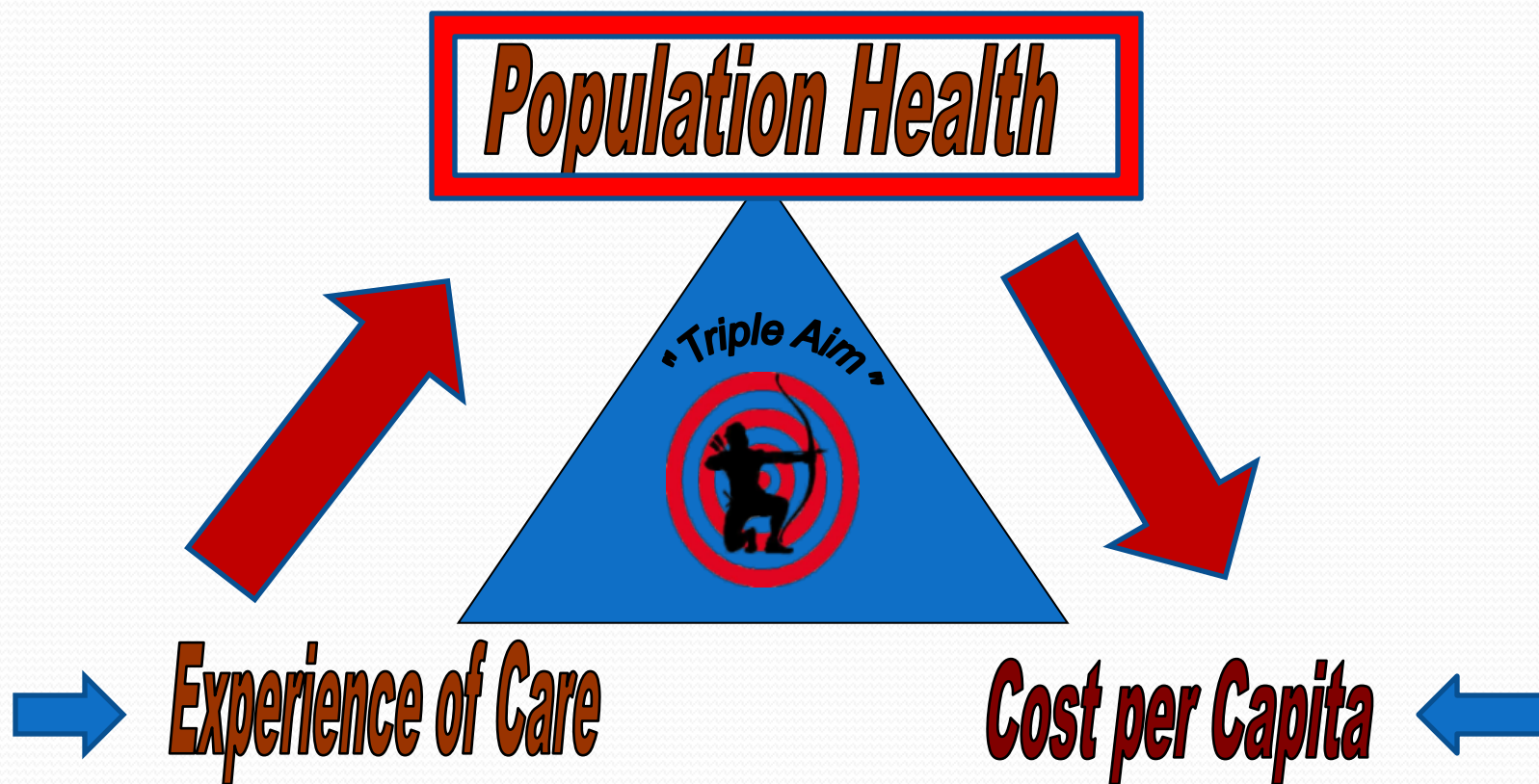
An Age Friendly Public Health System for Colorado

Gabriel Kaplan
Chief Health Promotion and Chronic
Disease Prevention Branch
Department of Public Health &
Environment

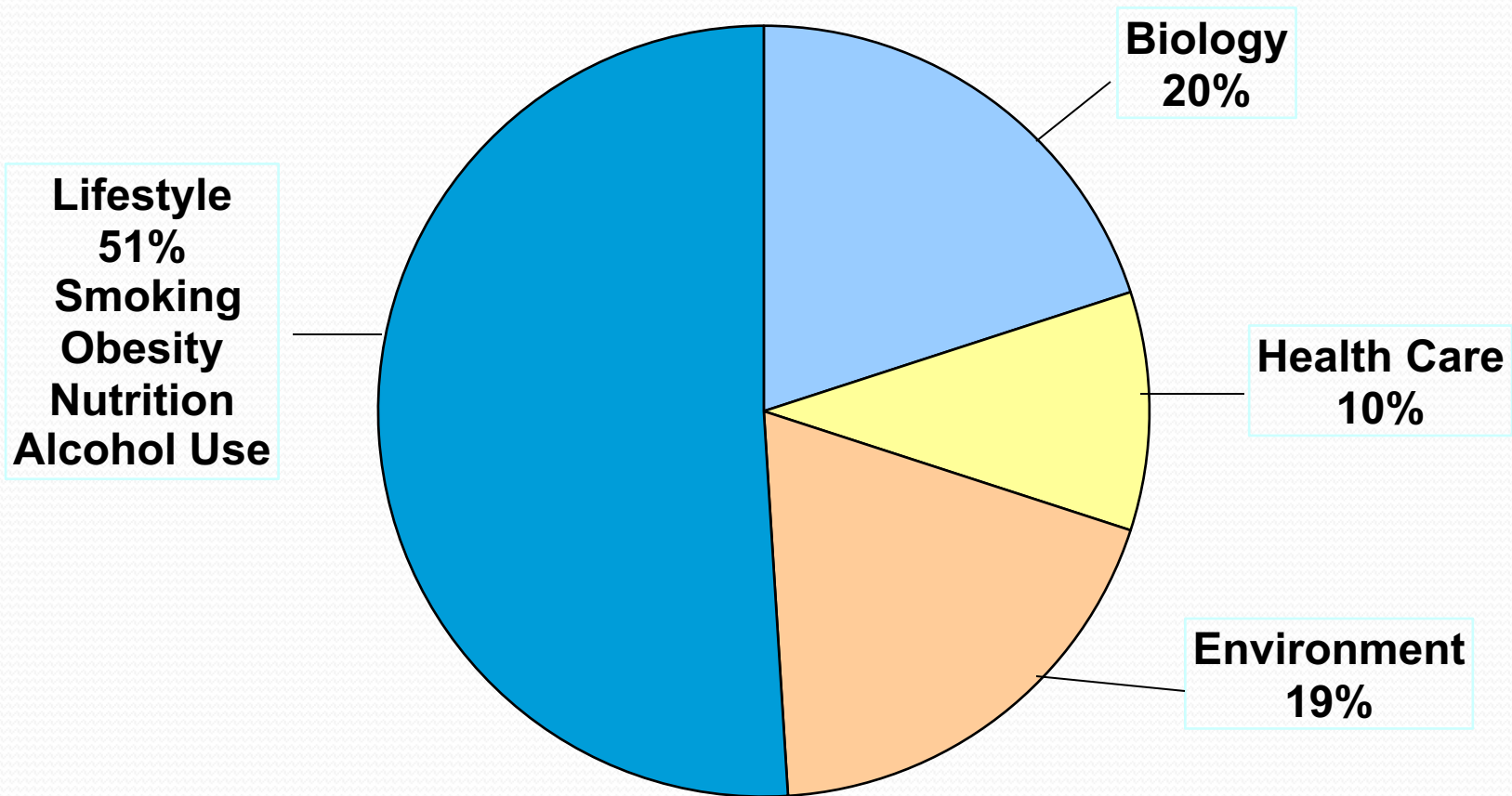
What is Public Health?

Public health is the practice of preventing disease and promoting good health by providing the resources and creating environments that help people stay healthy.

The “Triple Aim”

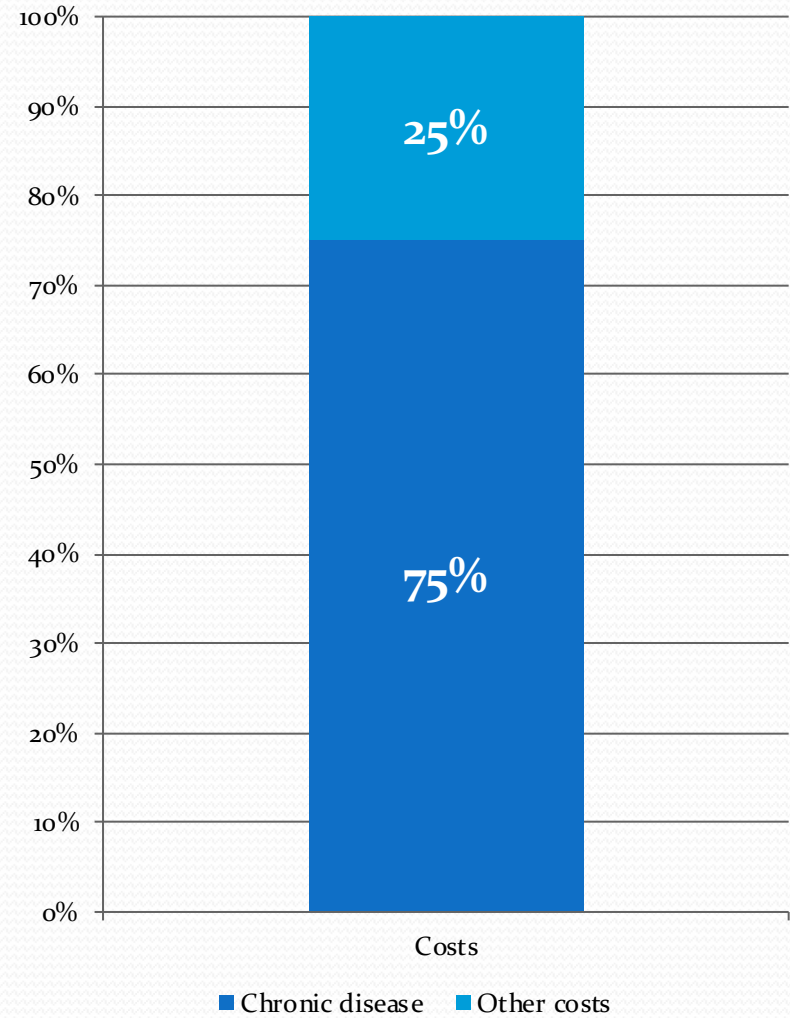
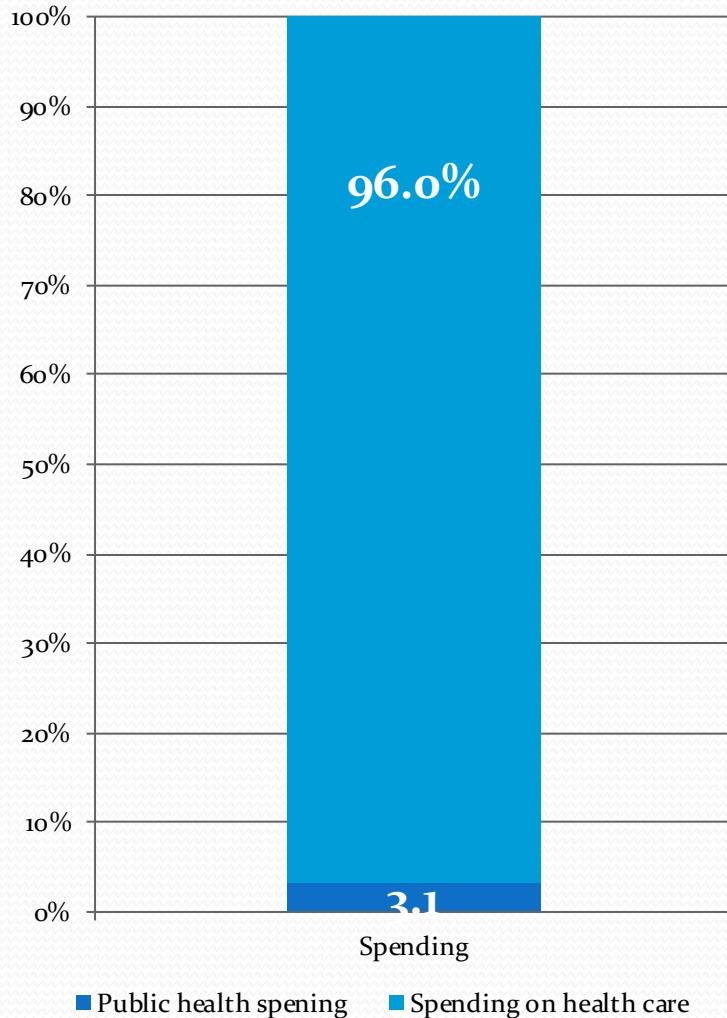


Factors Influencing Health Status



Source: McGinnis, J.M and Foege, W.H. (1993). "Actual Causes of Death in the United States," Journal of the American Medical Association.

Spending on Health Care vs. Public Health



John Snow

- Father of modern epidemiology
- London Cholera epidemic of 1854
- Closing down the Lambeth Well



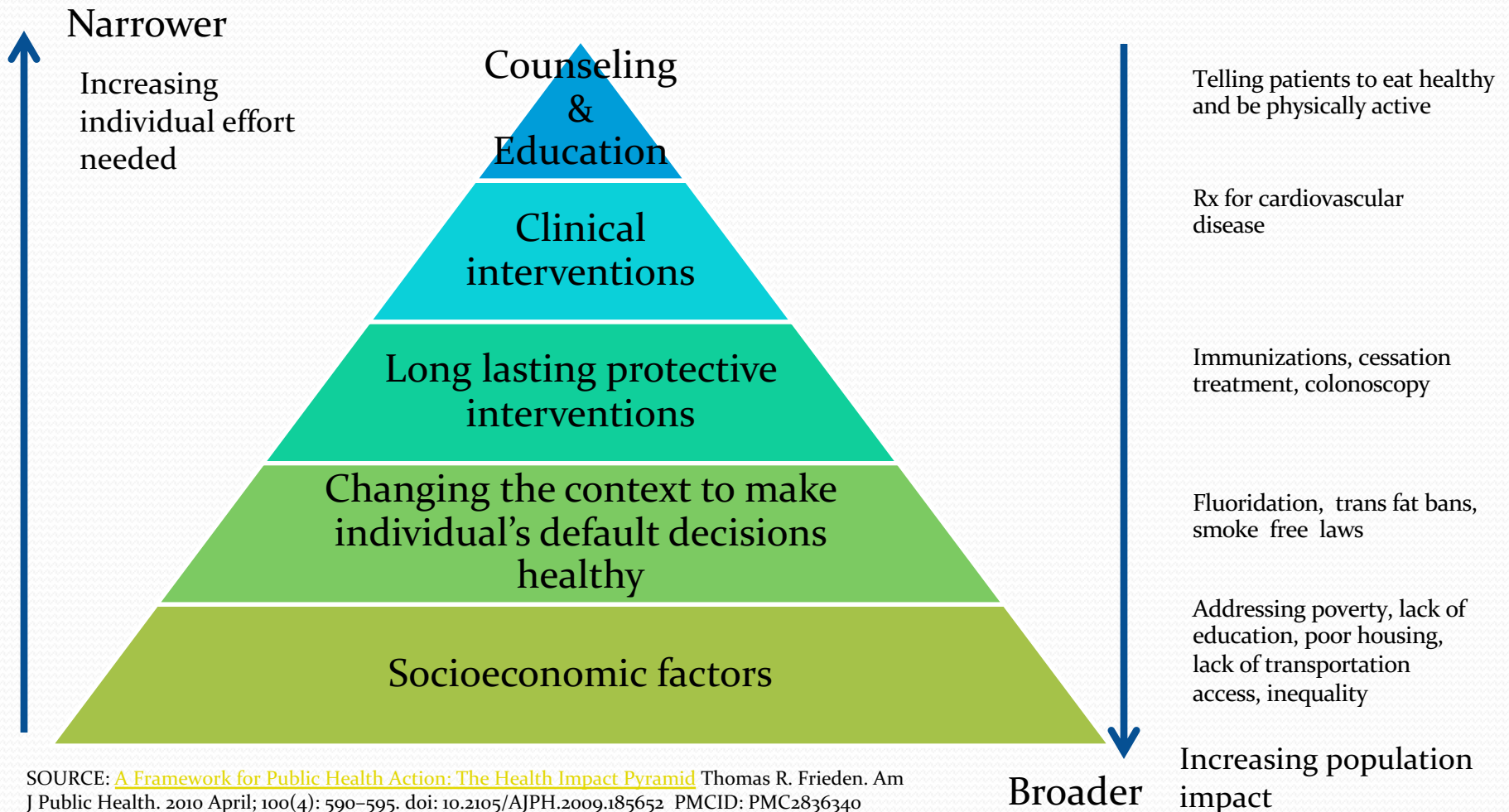
Key Public Health Take-away

Dr Snow realized that the key was not to bring more doctors into central London, but to identify and shut down the source of the disease

Historical Schizm in Public Health

- Population-based health measures:
 - Community water fluoridation
 - Motor vehicle safety
 - Tobacco control
- Gap-filling services
 - Immunizations
 - Family planning
 - Screening

Freiden's Health Impact Pyramid

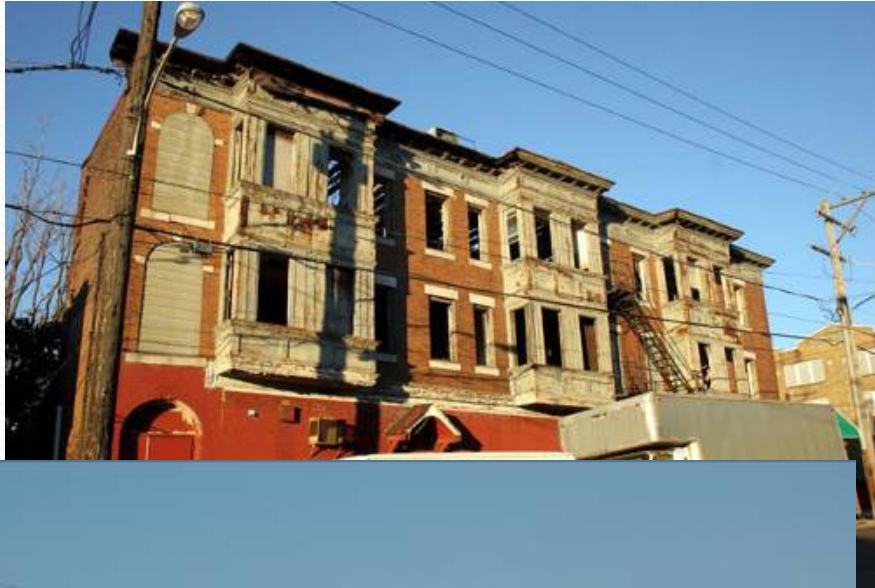


SOURCE: [A Framework for Public Health Action: The Health Impact Pyramid](#) Thomas R. Frieden. Am J Public Health. 2010 April; 100(4): 590-595. doi: 10.2105/AJPH.2009.185652 PMID: PMC2836340

Socio-Ecological Model



The Neighborhood Context



The Emergence of Public Health 3.0

Public Health 1.0

- Infection control through treatment - TB
- Clinical preventive measures – immunizations

Public Health 2.0

- Policy and environmental change – Seatbelts, tobacco tax
- Systems building – Diabetes Prevention Program

Public Health 3.0

- Social determinants of health – food, housing, transport
- Partnerships – Education, Human Services, Transportation, Housing, Revenue....

Roles of Public Health - PSE

- Gathering and analyzing data
- Building systems of care and support
- Deploying strategies of disease prevention and control
- Establishing model policies
- Demonstrating viability of new approaches
- Disseminating information and health education
- Convening allies and partners in dialogue and collaborative initiatives
- Safety net and gap-filling services

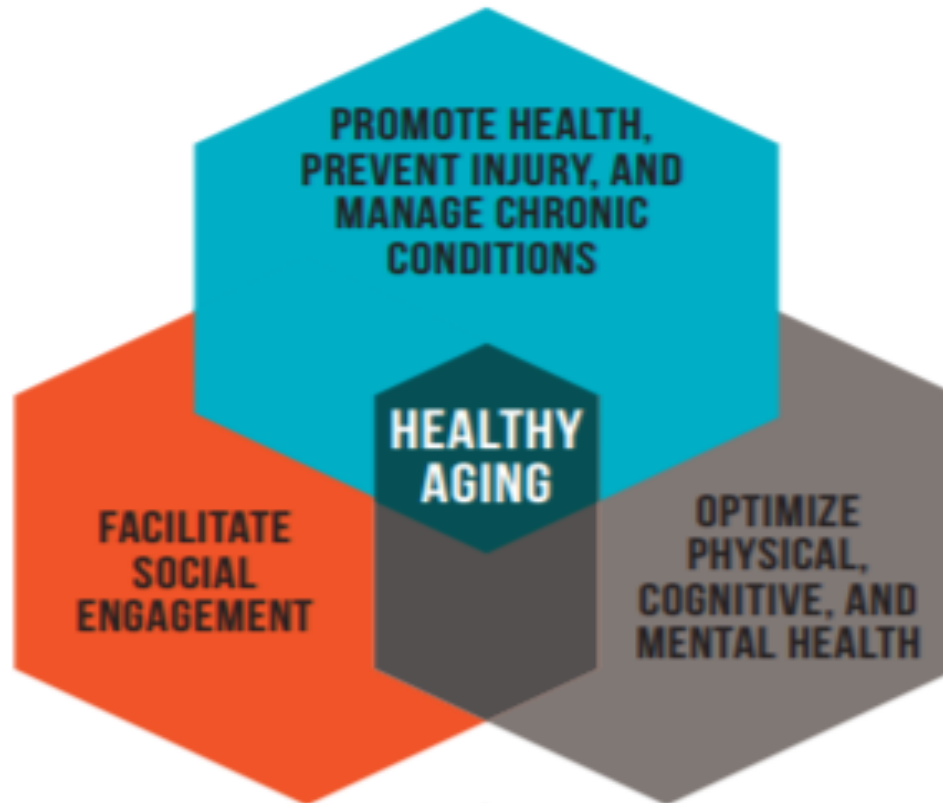
Components of an Age Friendly Public Health System

- 1) promoting health, preventing injury, and managing chronic conditions;
- 2) optimizing physical, cognitive, and mental health; and
- 3) facilitating social engagement.

“Healthy aging involves maximizing physical, mental, emotional, and social well-being, while recognizing that aging often is accompanied by chronic illnesses and functional limitations, including lifelong conditions. And it emphasizes the importance of meaningful involvement of older adults with others, such as friends, family members, neighbors, organizations, and the wider community.”



Guiding Model for Healthy Aging



SOURCE: Modified from: Rowe JW, Kahn RL. *Successful Aging*. New York: Pantheon, 1998; and Marshal VW, Altpeter M. *Health & Social Work* 2005; 30(2):135-144.

Tasks for A Public Health

Approach to Aging

1. Connecting and convening multiple sectors and professions that provide the supports, services, and infrastructure to promote healthy aging.
2. Collecting data to assess community health status (including inequities) and aging population needs to inform the development of interventions.
3. Conducting, communicating, and disseminating research findings and best practices to support healthy aging.
4. Identifying duplication, consolidating and encouraging coordination of services, highlighting gaps and modeling new systems of service and supports.
5. Fostering integrated, whole person health approaches focused on prevention and disease management.

FIGURE 5

Healthy Aging Actions to Advance the National Prevention Strategy



Examples

- New York initiative on respite care
- Lay health workers – health navigation
- Silver sneakers
- Built environment initiatives
- Silver cab services
- The villages